

# 11 Jasmyne Street Lismore

## Table of Contents

- | [Property Details](#)
- | [Photo Gallery](#)
- | [Map](#)
- | [Contact For Inspection](#)

## Property Details

**11 Jasmyne Street, Lismore**



**ELEVATED, ARTISTIC & AFFORDABLE**

**3**  **1**  **1** 

Privately tucked away at the end of a quiet cul-de-sac, this striking black weatherboard home is a rare find. It offers a stylish and elevated lifestyle with panoramic south-westerly views over Lismore and beyond.

- 3 Bedrooms
- 1 Bathroom
- 1 Garage

Set in a flood free position, the home combines artistic character with modern practicality. Featuring 3 bedrooms, all offering a different touch. You'll enjoy modern conveniences like louvre windows, solar hot water, ceiling fans and air conditioning units.

The spacious, updated bathroom is a standout. Complete with raked ceilings, a skylight and an internal laundry thoughtfully integrated for daily ease. The three bedrooms are well proportioned and the living area is filled with natural light and designed to capture leafy outlooks and city views through the rear.

The home is perfect for first home buyers getting into the market or those looking for a residence to make their own. From the elevated rear deck, enjoy the sunsets and a private sense of retreat, all while being in the heart of Lismore.

Just minutes from Lismore Base Hospital and medical practices and approximately 2 km to the CBD, this home offers exceptional convenience in a quiet, elevated setting.

---

**\$570,000**



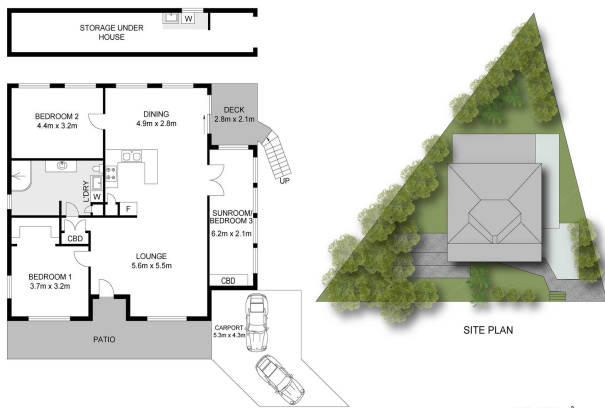
## Photo Gallery







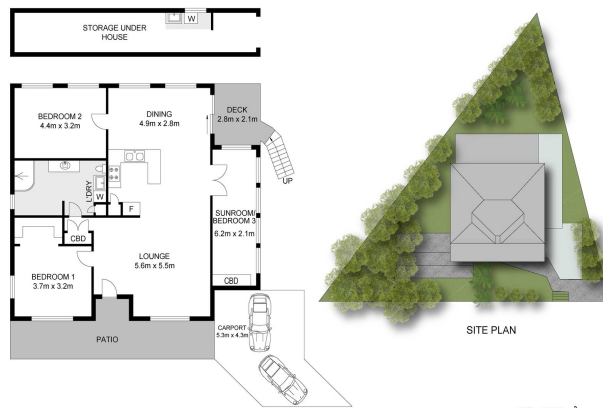




Dimensions are approximate. All information contained herein gathered from sources we believe to be reliable. However we cannot guarantee its accuracy and interested persons should rely on their own enquiries. Single intended use purposes only, not to be duplicated © 2023 www.visionmedia.vision - 0411 444 223

**11 Jasmyne Street, Lismore**

INT : 130.1m<sup>2</sup>  
EXT : 24.9m<sup>2</sup>  
CARPORT : 22.8m<sup>2</sup>



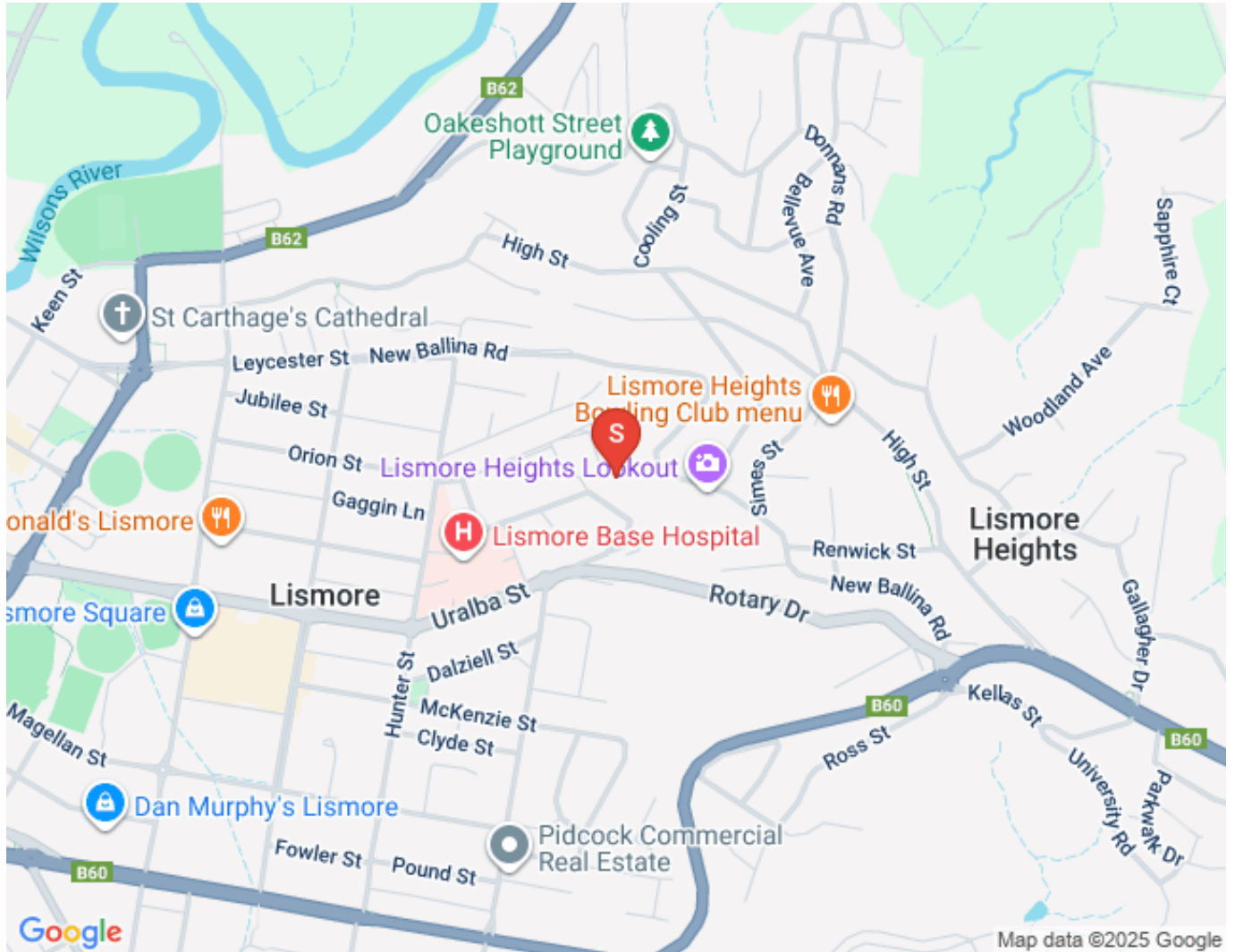
Dimensions are approximate. All information contained herein gathered from sources we believe to be reliable. However we cannot guarantee its accuracy and interested persons should rely on their own enquiries. Single intended use purposes only, not to be duplicated © 2023 www.visionmedia.vision - 0411 444 223

**11 Jasmyne Street, Lismore**

INT : 130.1m<sup>2</sup>  
EXT : 24.9m<sup>2</sup>  
CARPORT : 22.8m<sup>2</sup>



## Map



## Contact For Inspection



**KEELY FOSTER**

SALES ASSOCIATE

---

0455 950 880

[keely@walmurray.com.au](mailto:keely@walmurray.com.au)